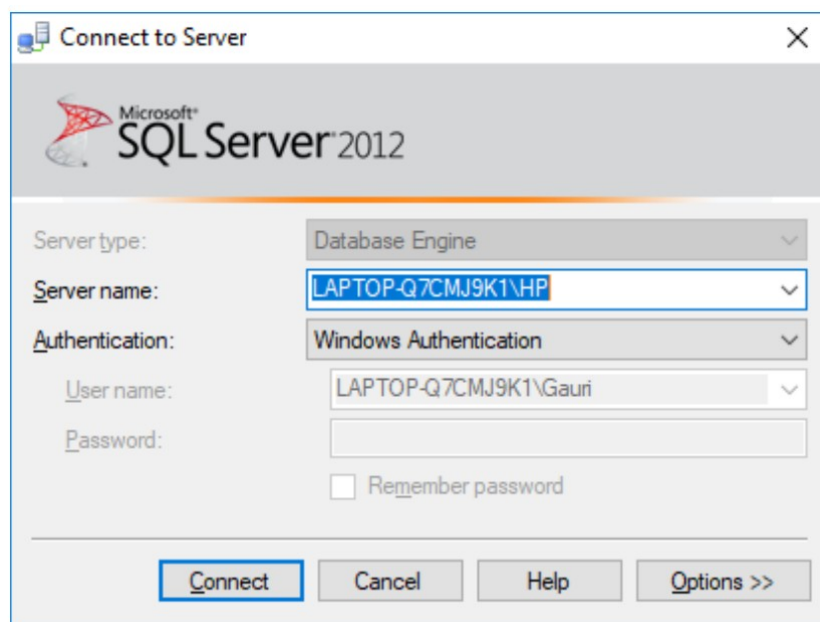
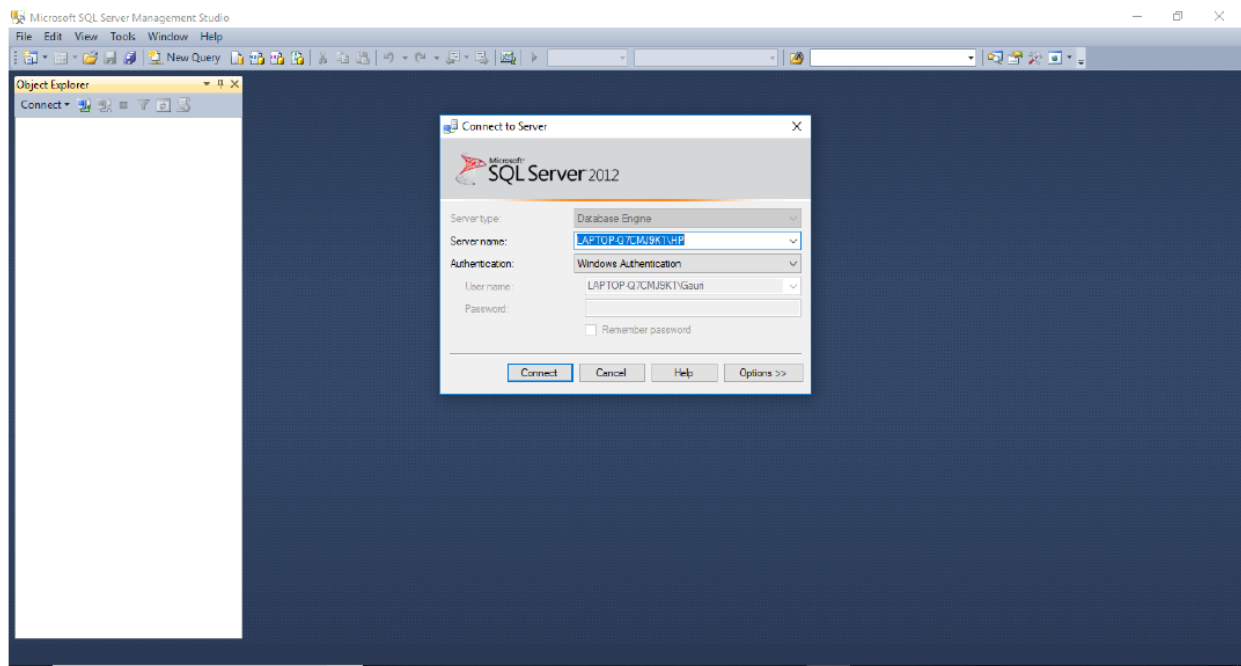
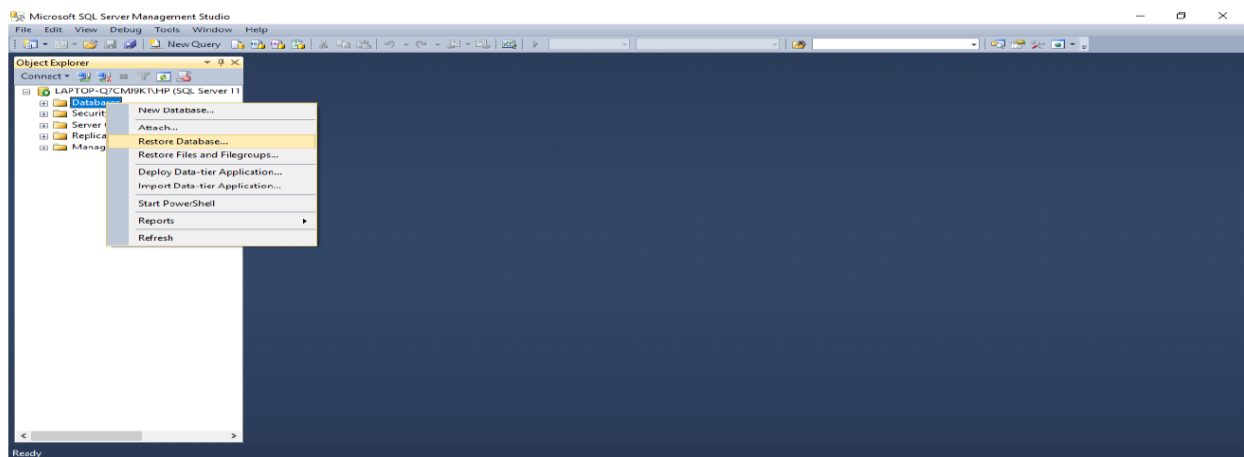


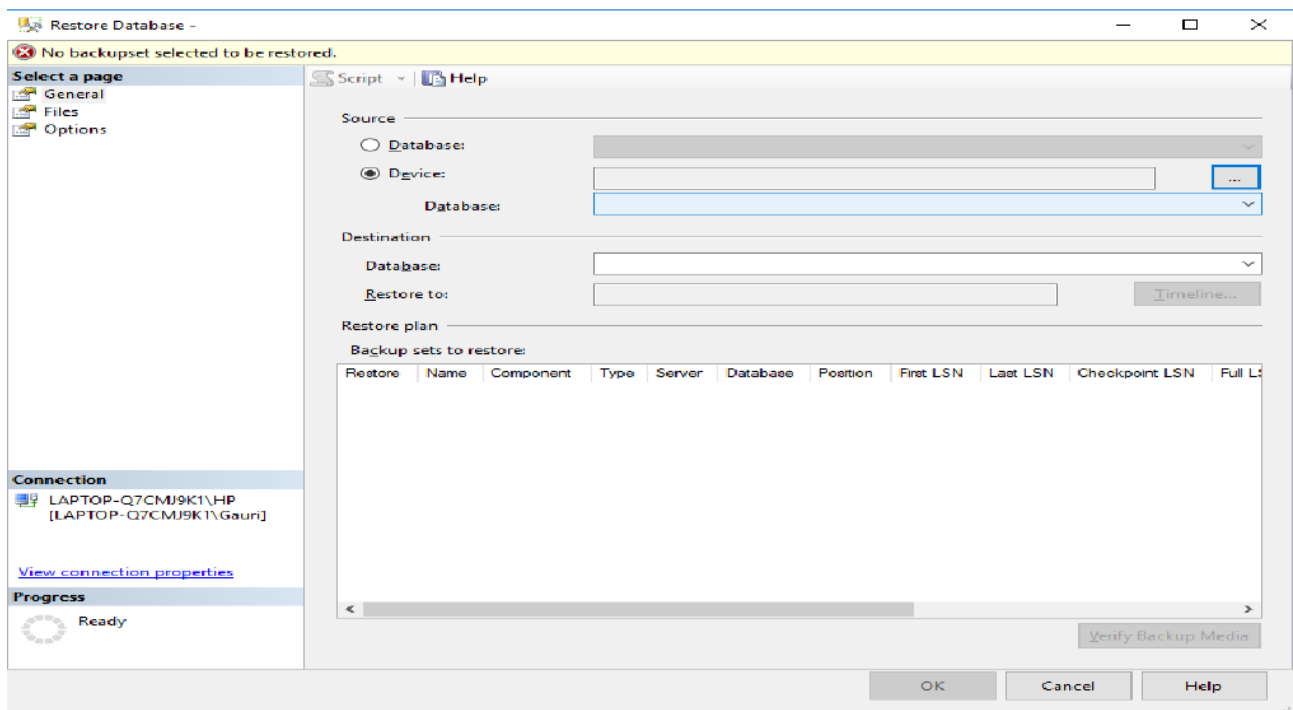
- 1) Install SQL SERVER 2012 FULL VERSION
(SQLServer2012SP1-FullSlipstream-ENU-x86)
- 2) Open SQL Server Management Studio to restore backup file

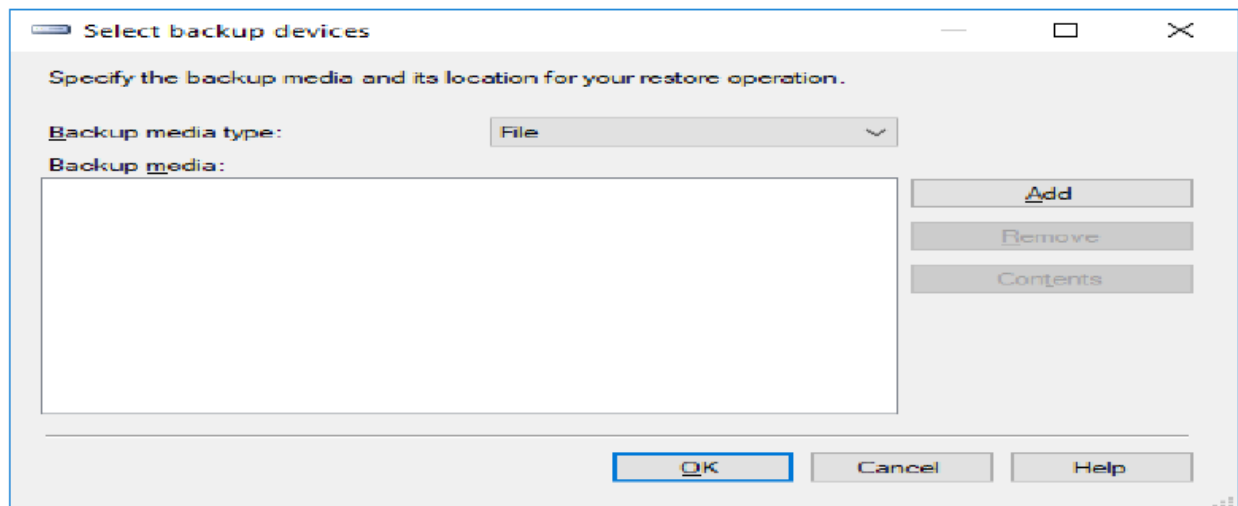


3) Right click on Databases → Restore Database

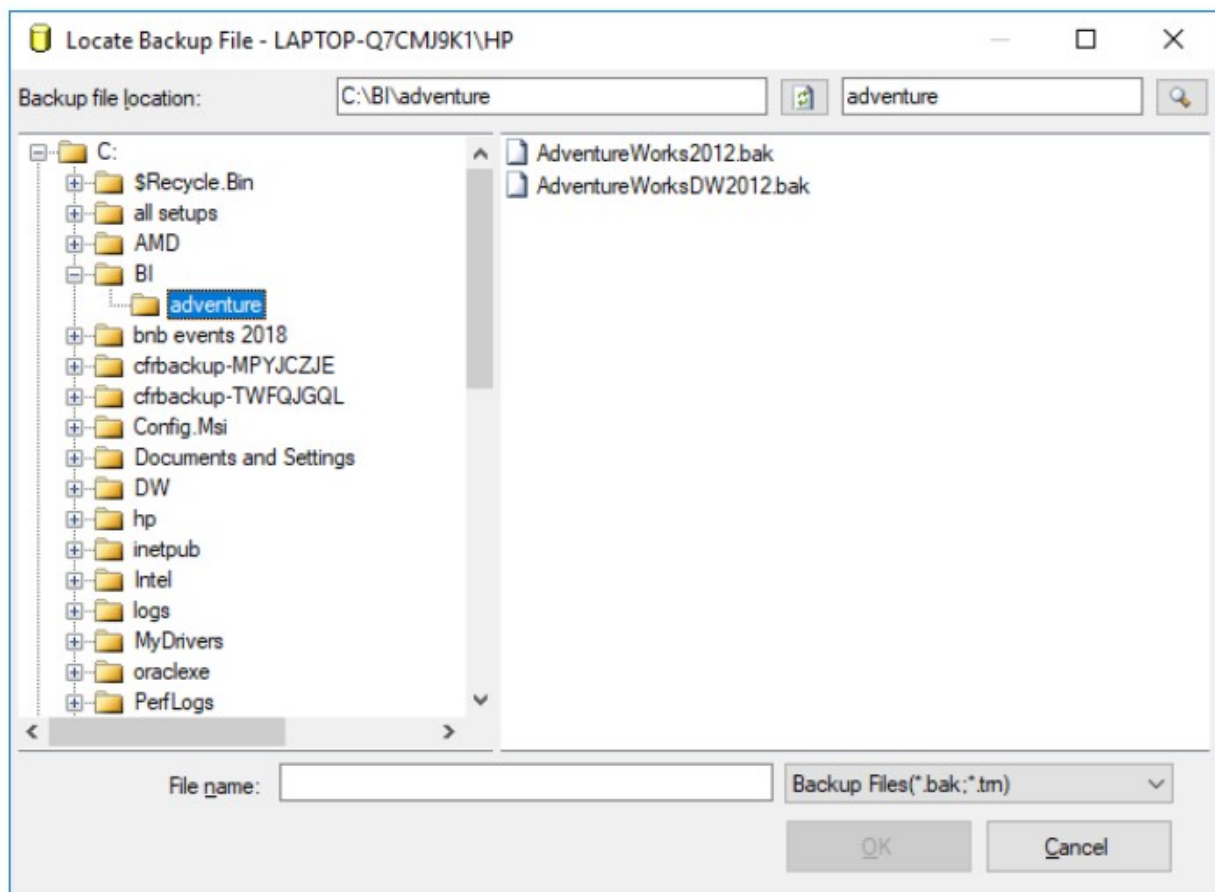


4) Select Device → click on ... icon towards end of device box

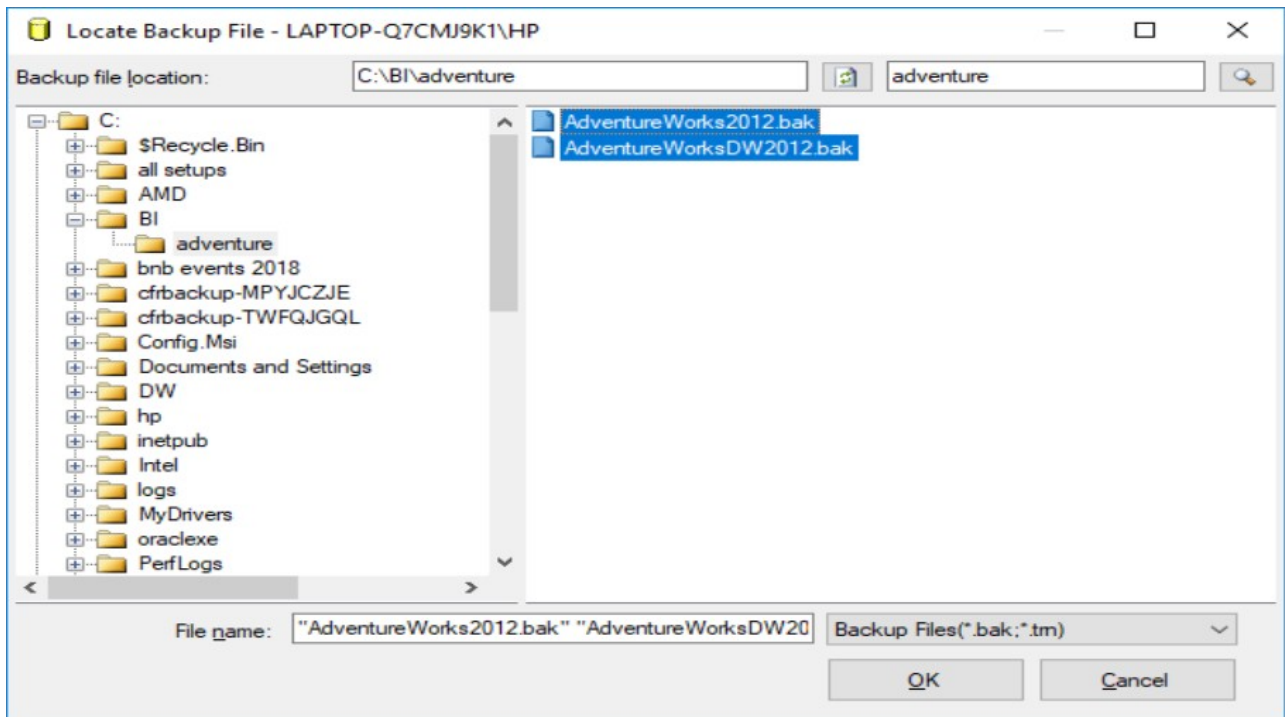




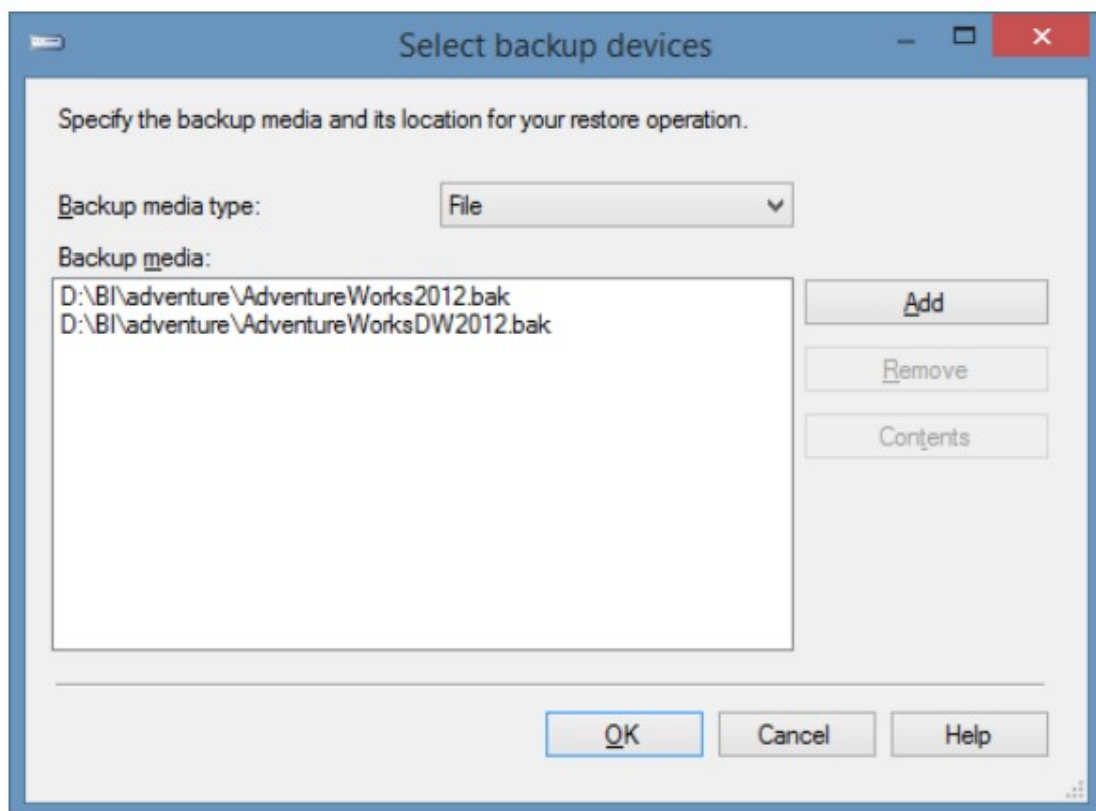
5) Click on Add → Select path of backup files

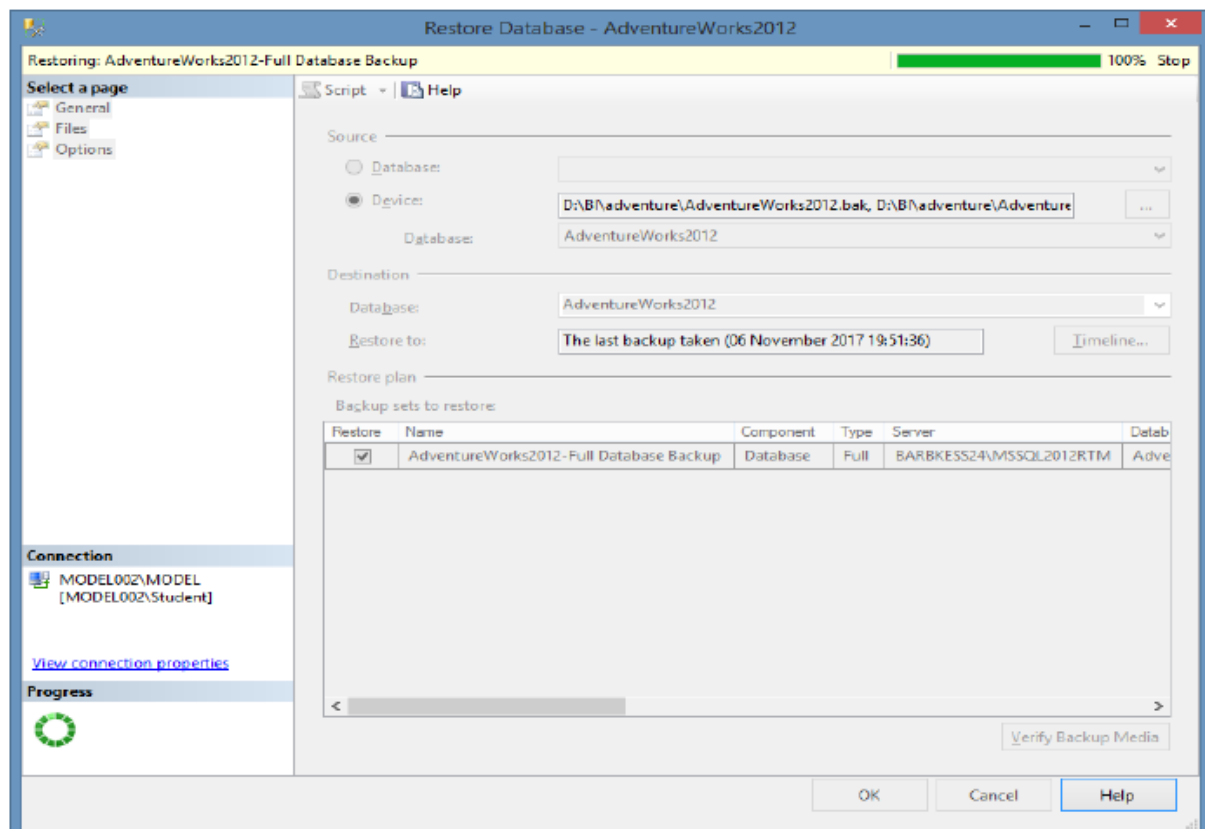
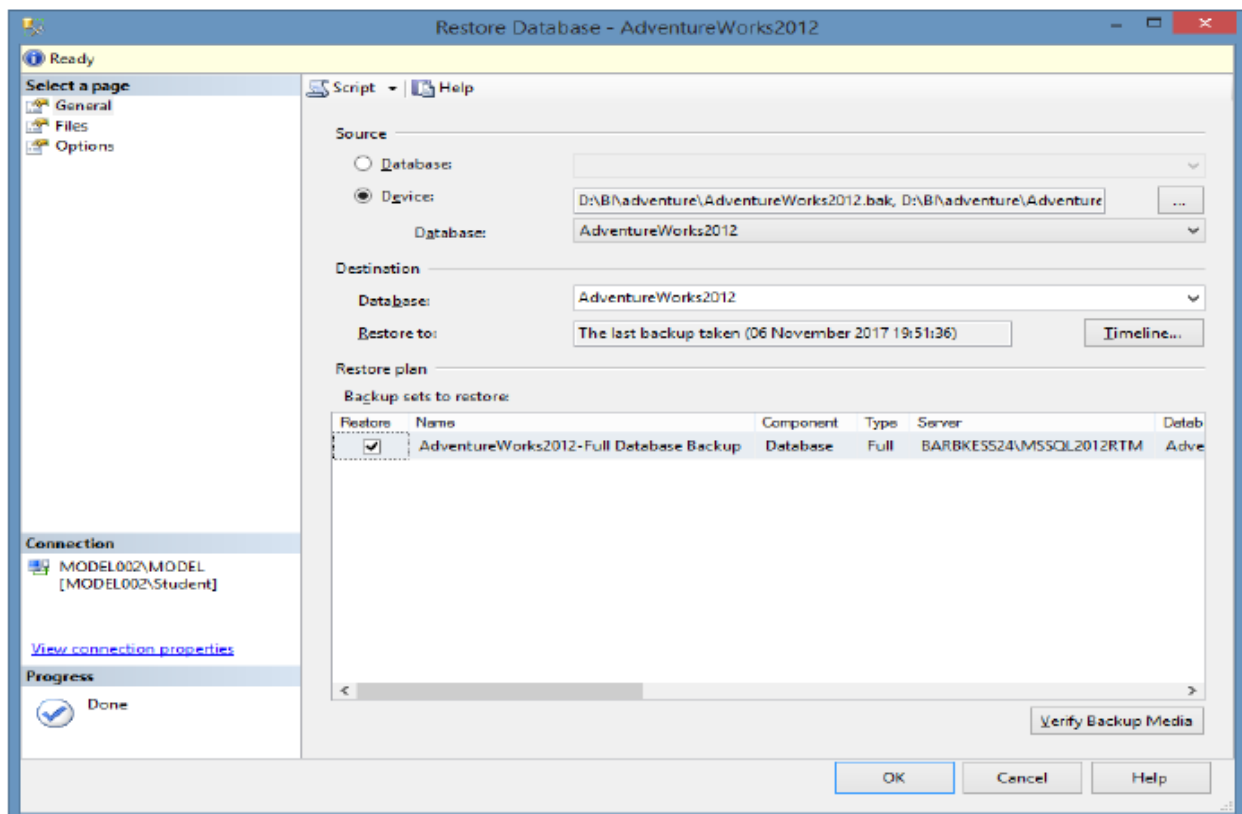


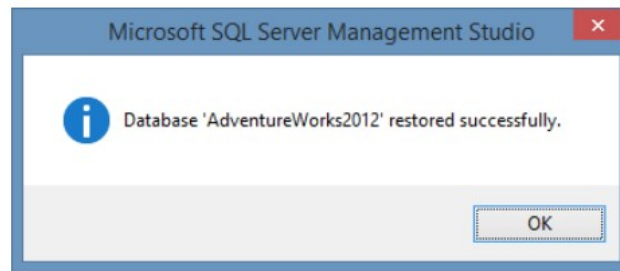
6) Select both files at a time



7) Click ok and in select backup devices window Add both files of AdventureWorks

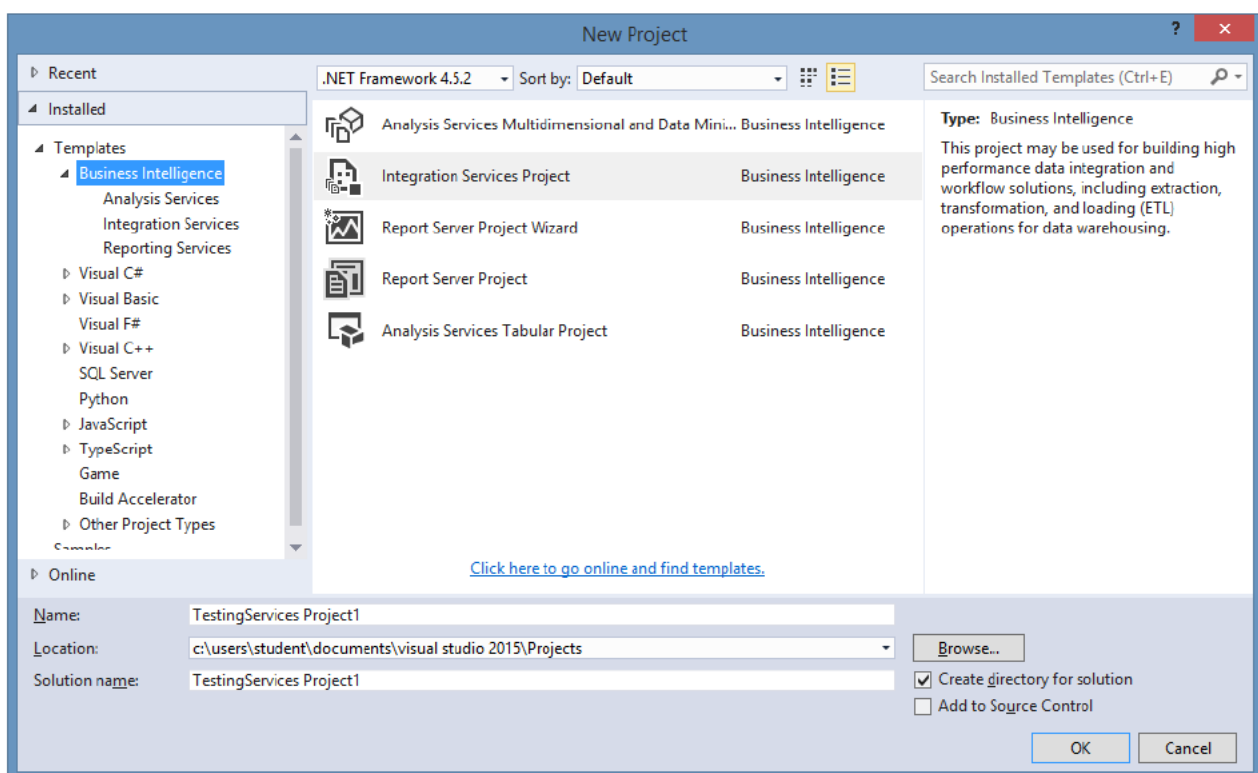


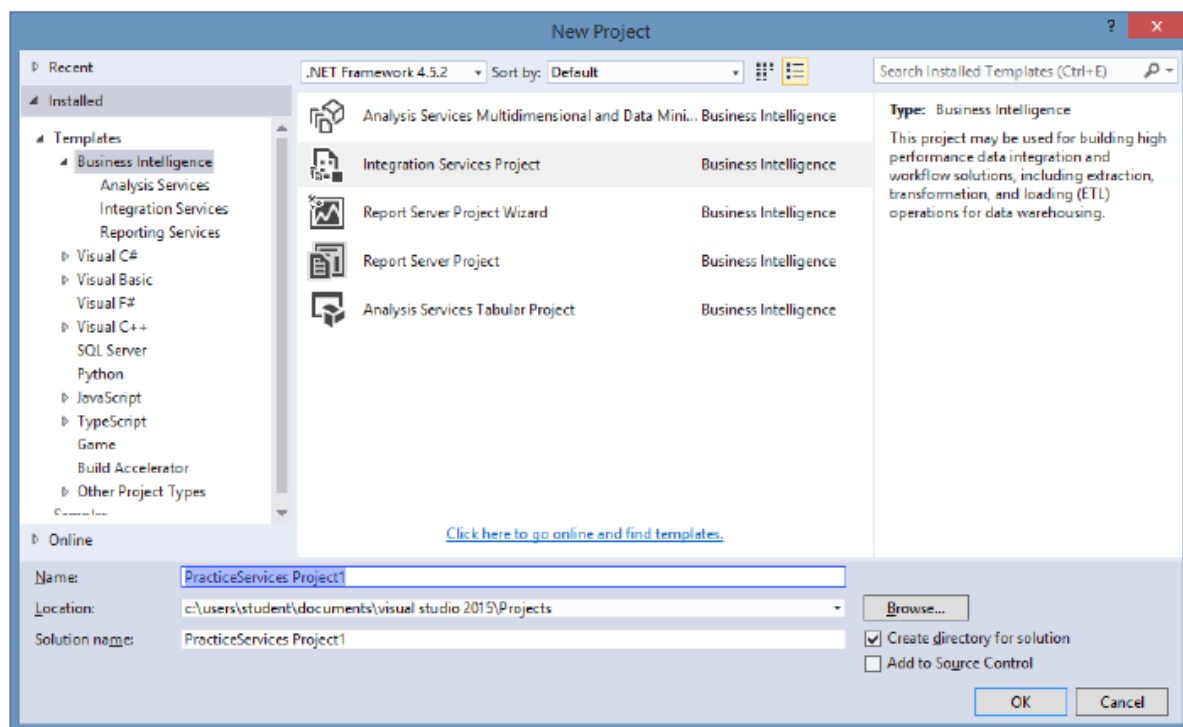
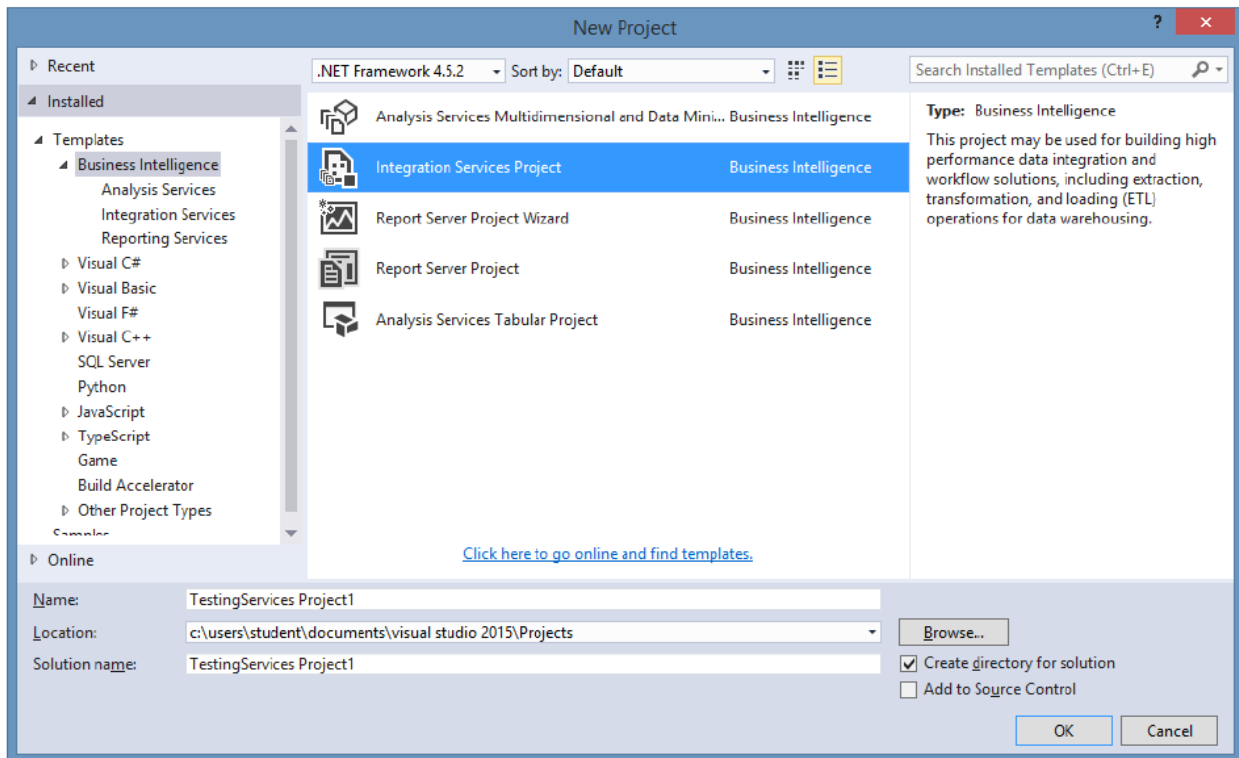


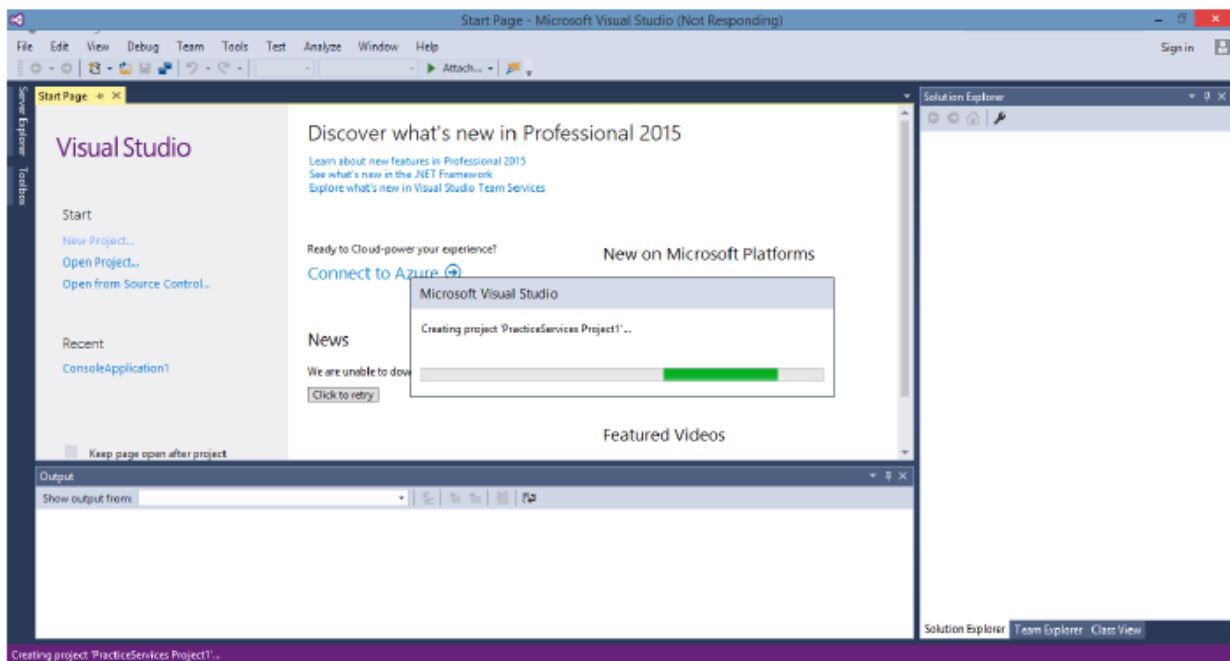


8) Open SQL Server Data Tools

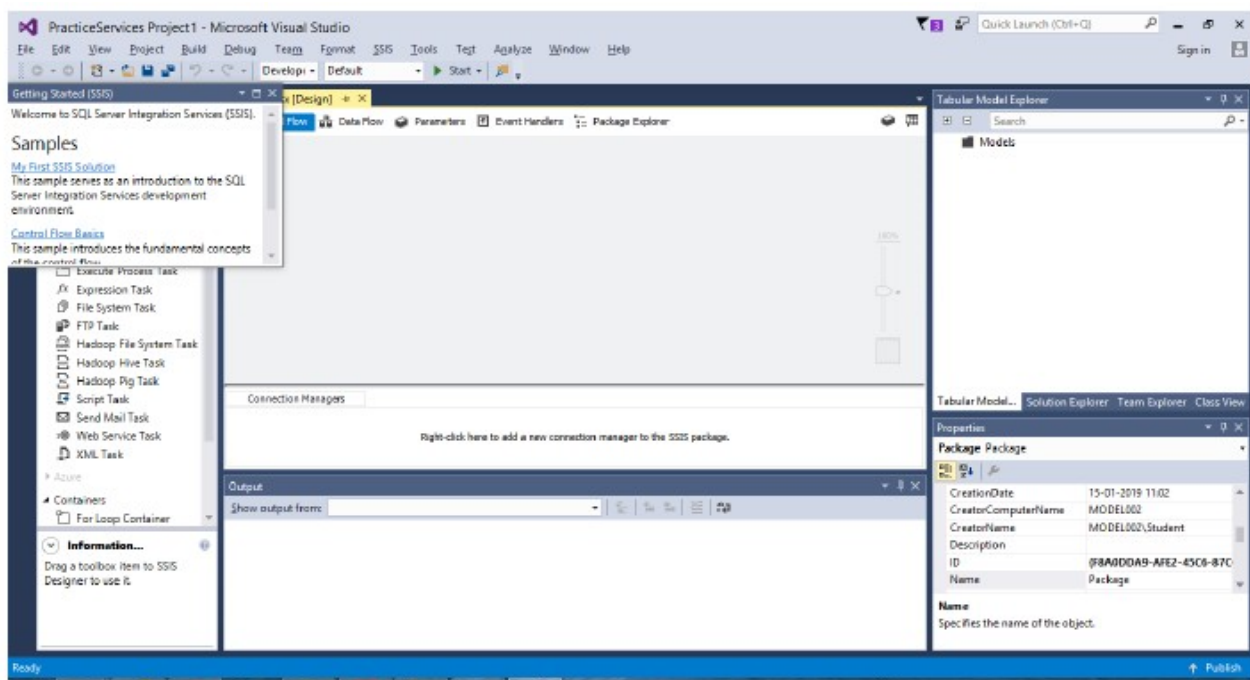
Select File → New → Project → Business Intelligence → Integration Services
Project & give appropriate project name



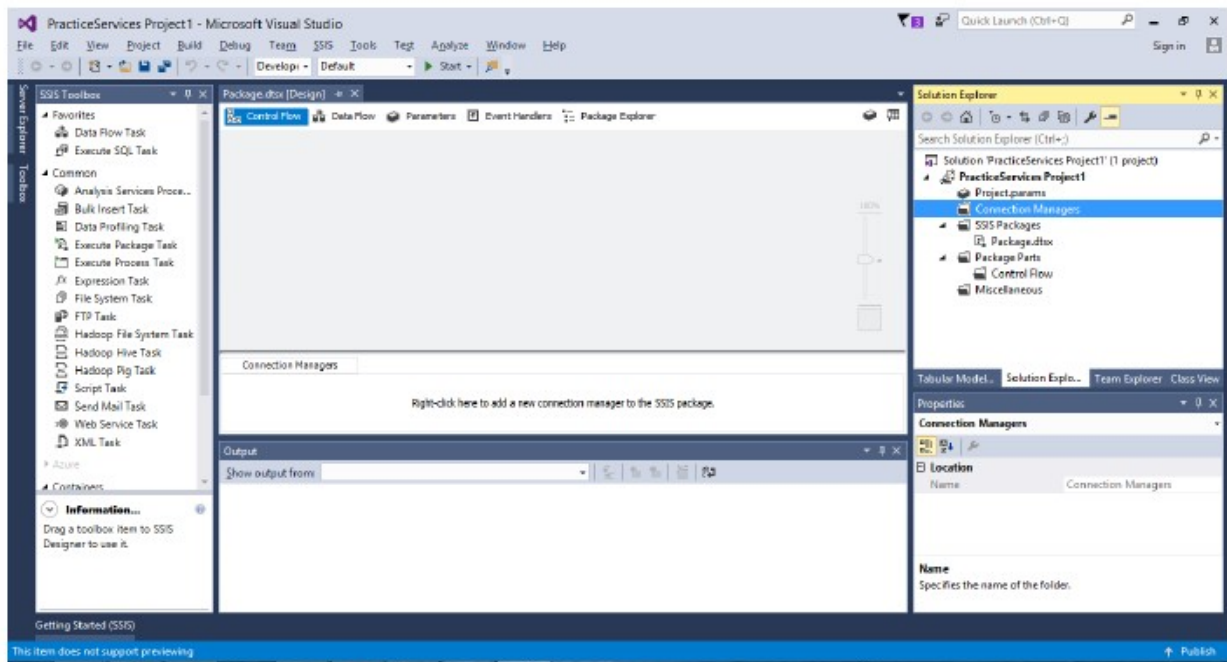




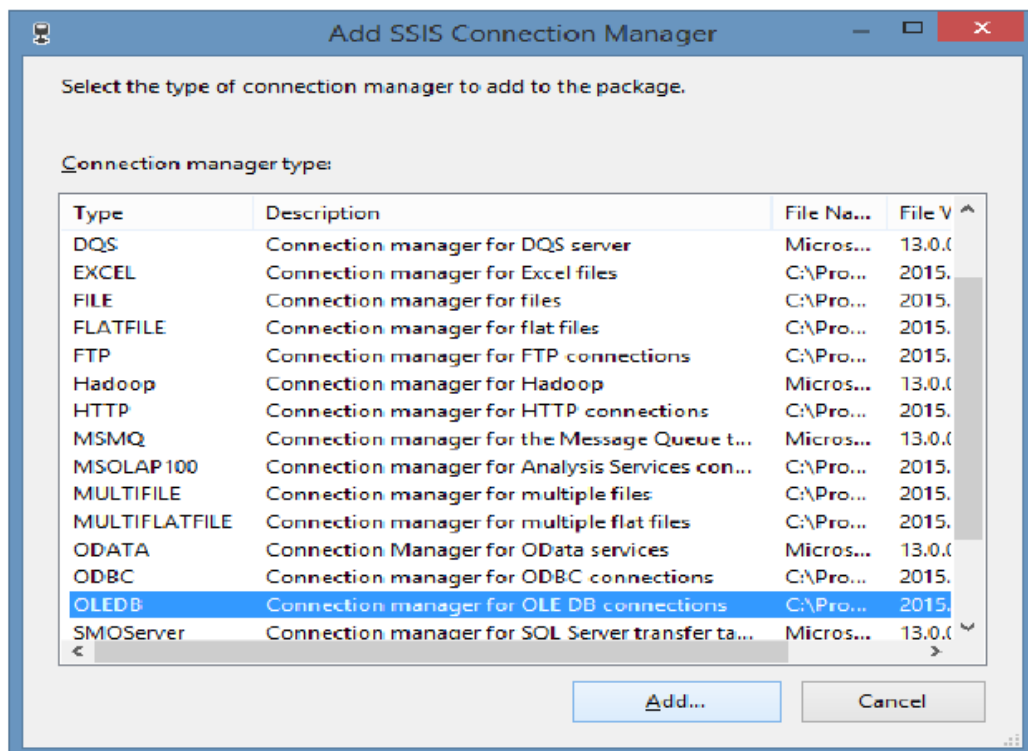
Environment consists of SQL Server Integration Services(SSIS)



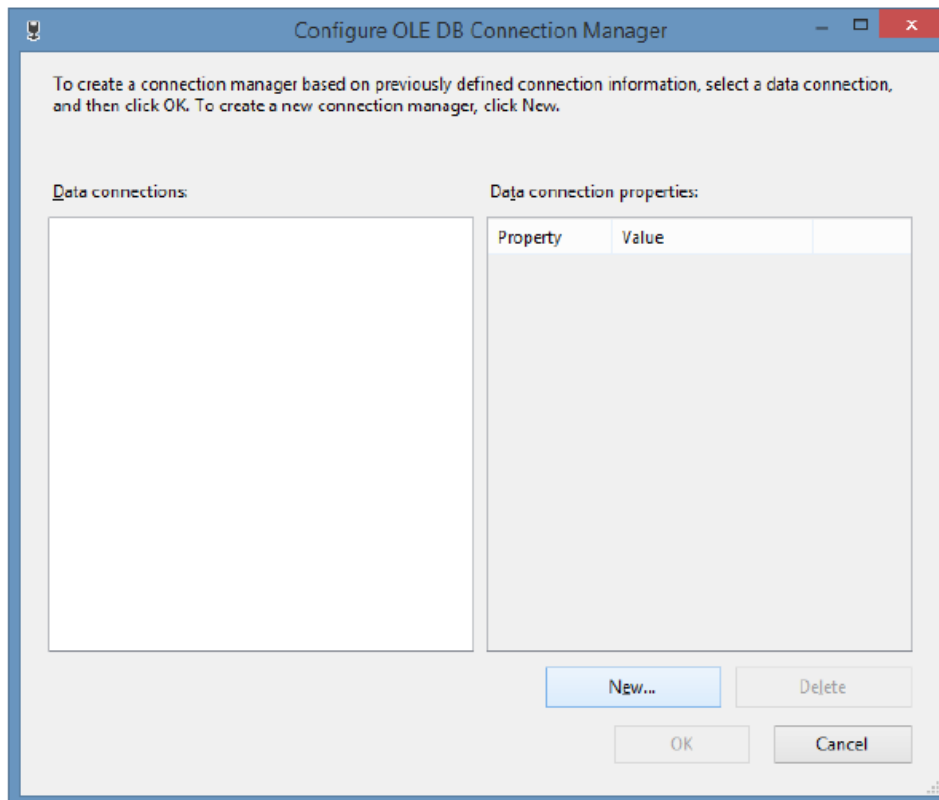
- 9) Right click on Connection Managers in solution explorer and click on New Connection Manager.
Add SSIS connection manager window appears.



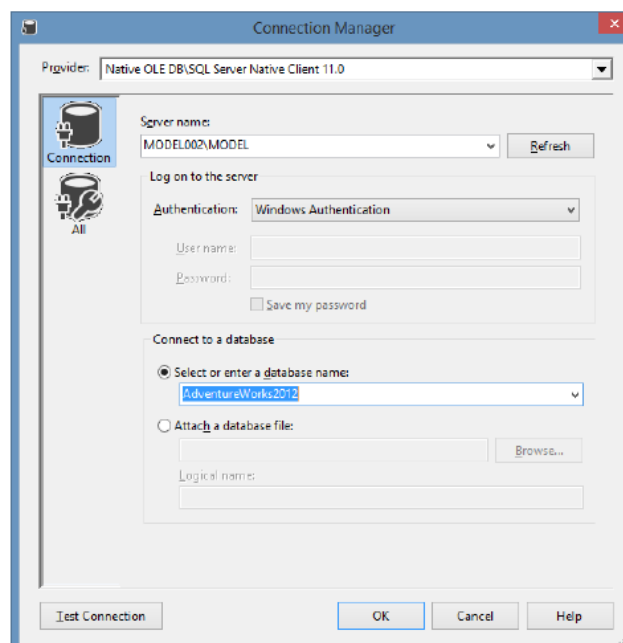
- 10) Select OLEDB Connection Manager and Click on Add



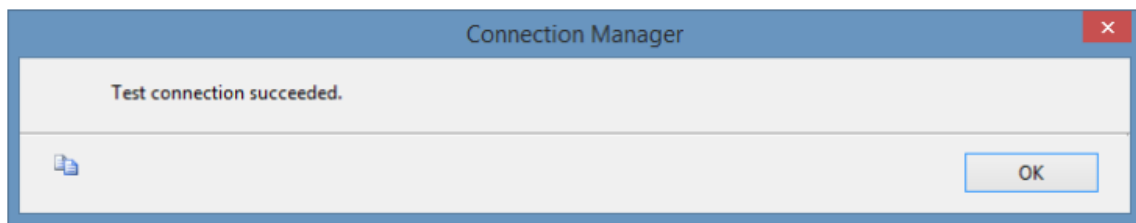
11) Configure OLE DB Connection Manager window appears → Click on New



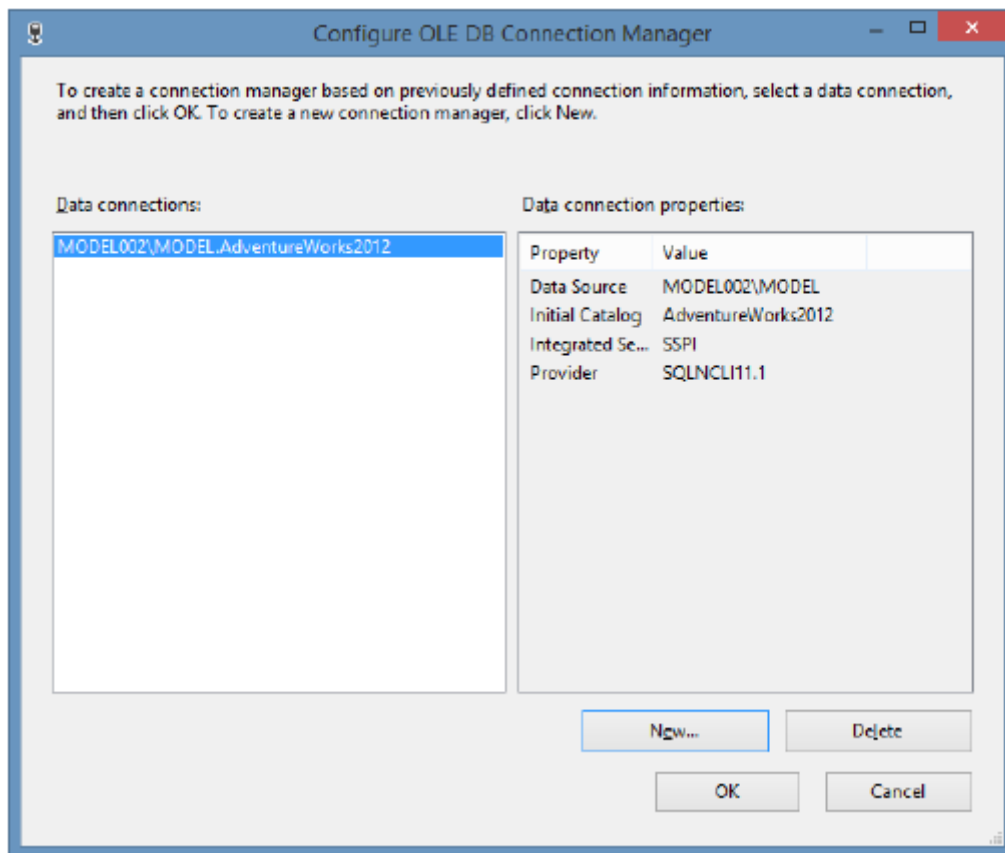
12) Select Server name(as per your machine) from drop down and database name and click on Test connection.



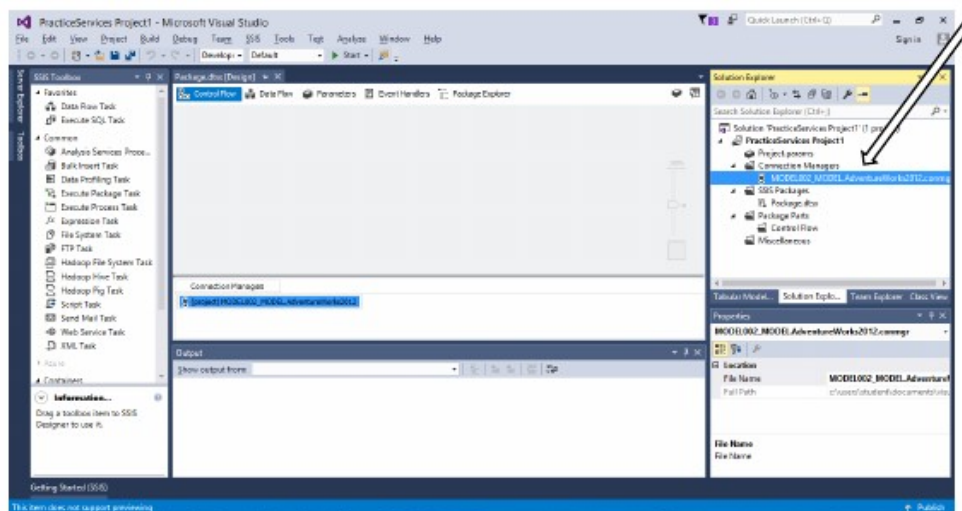
If test connection succeeded click on OK.



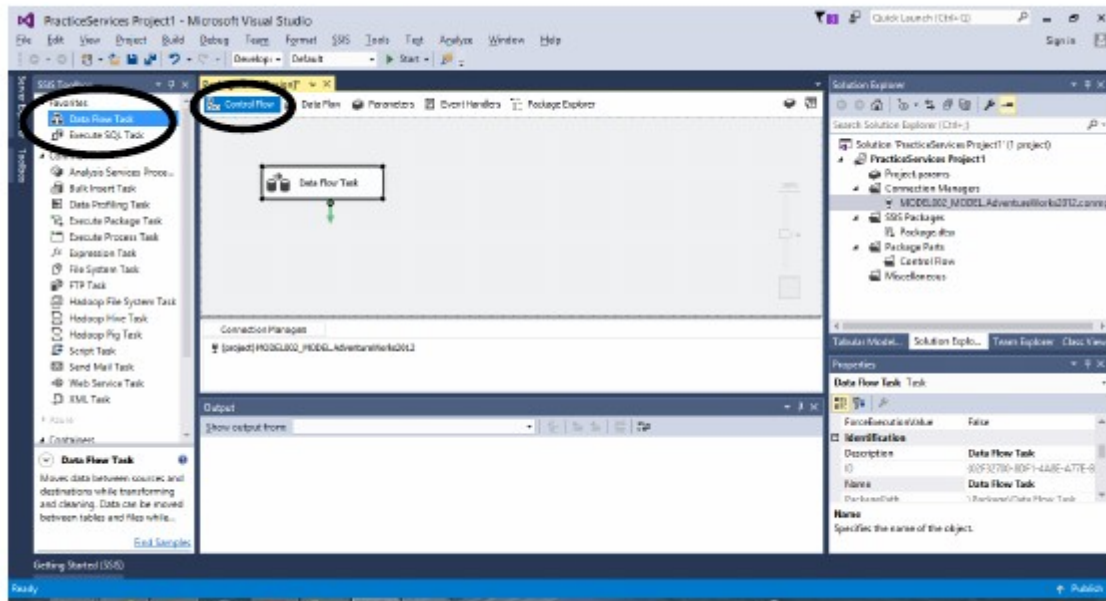
13) Click on OK



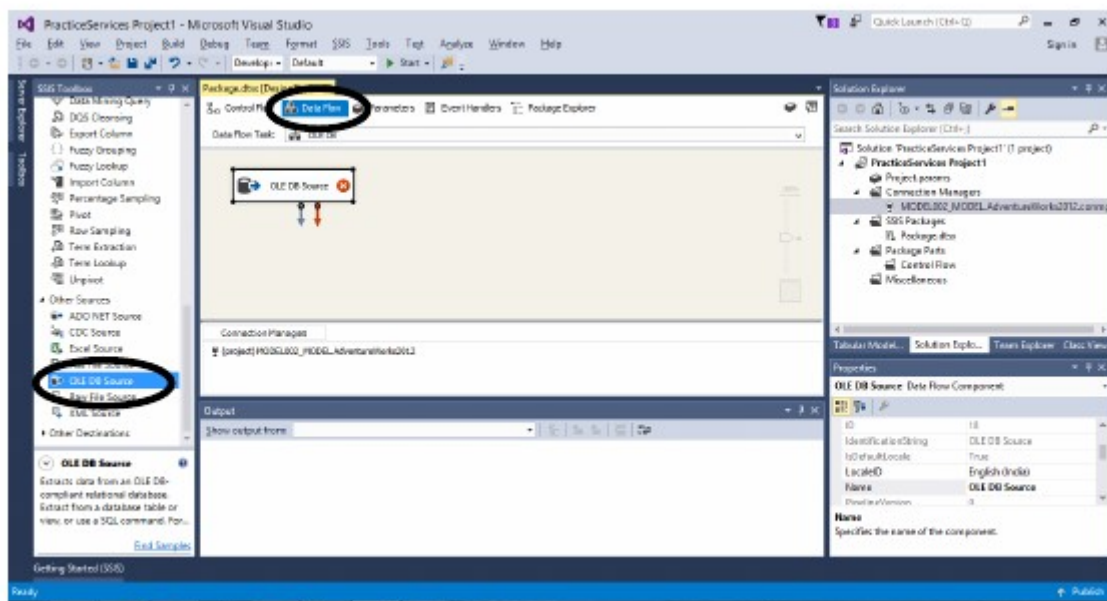
Connection is added to connection manager



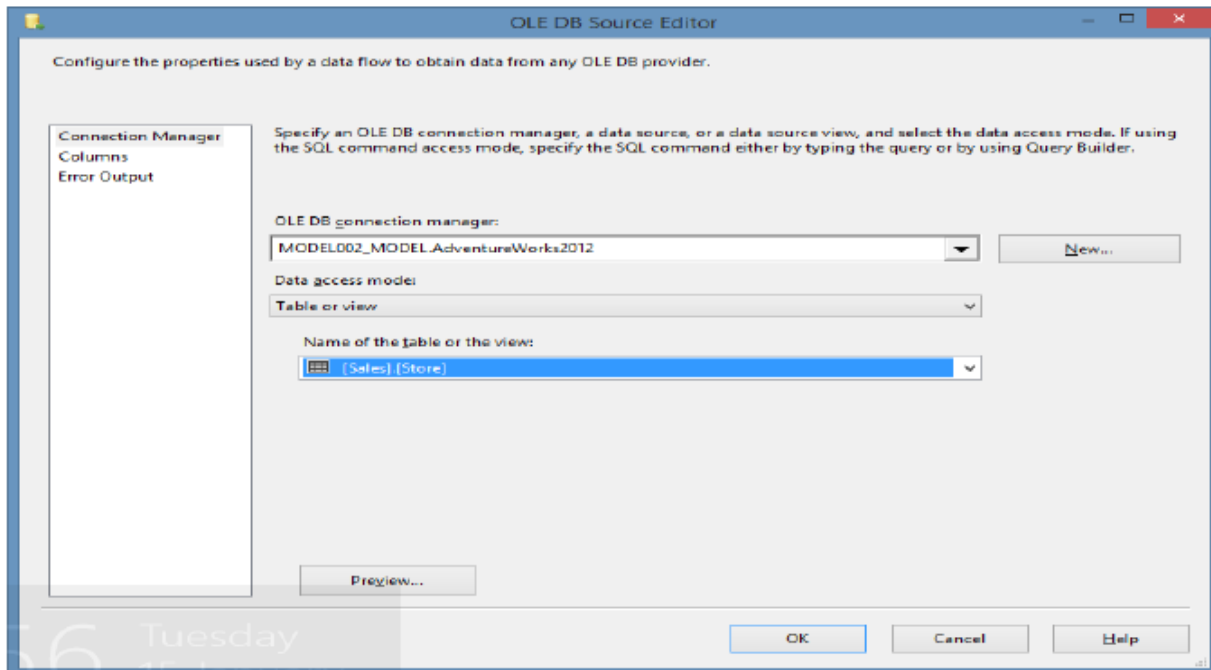
14) Drag and drop Data Flow Task in Control Flow tab



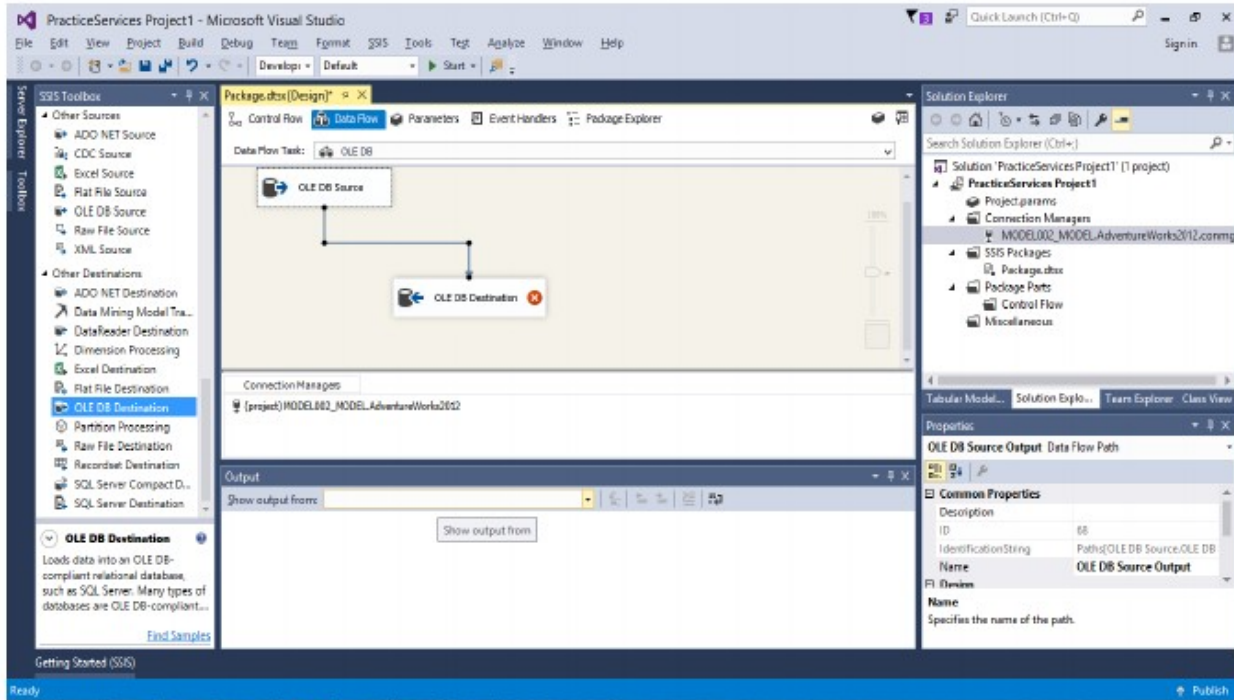
15) Drag OLE DB Source from Other Sources and drop into Data Flow tab



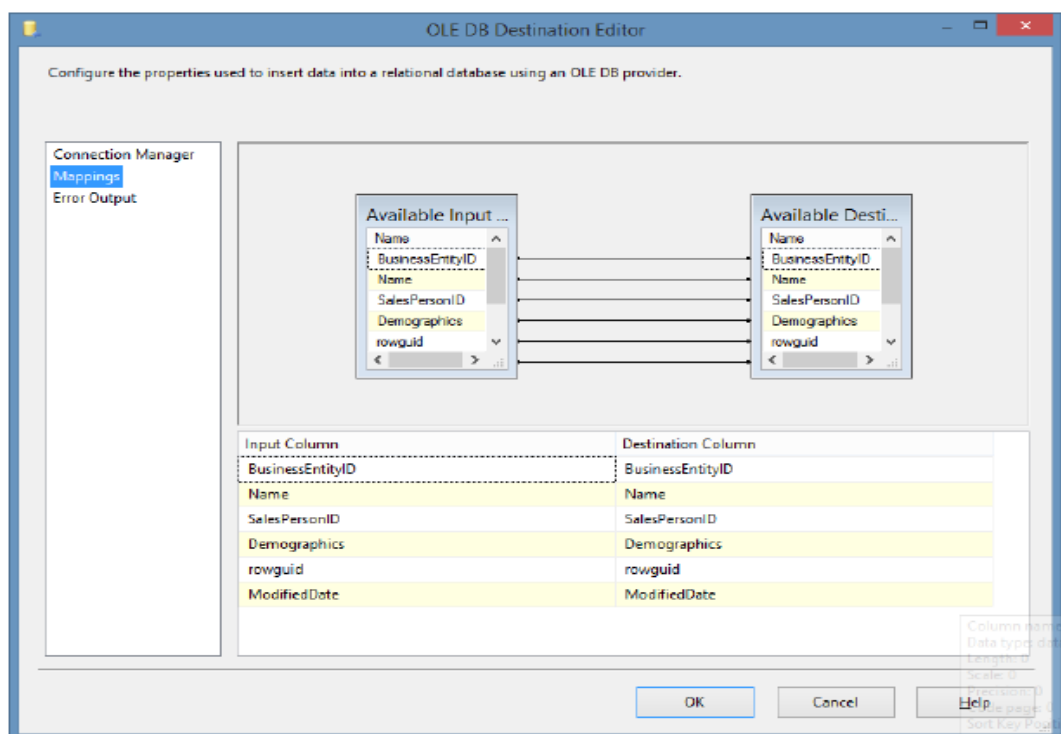
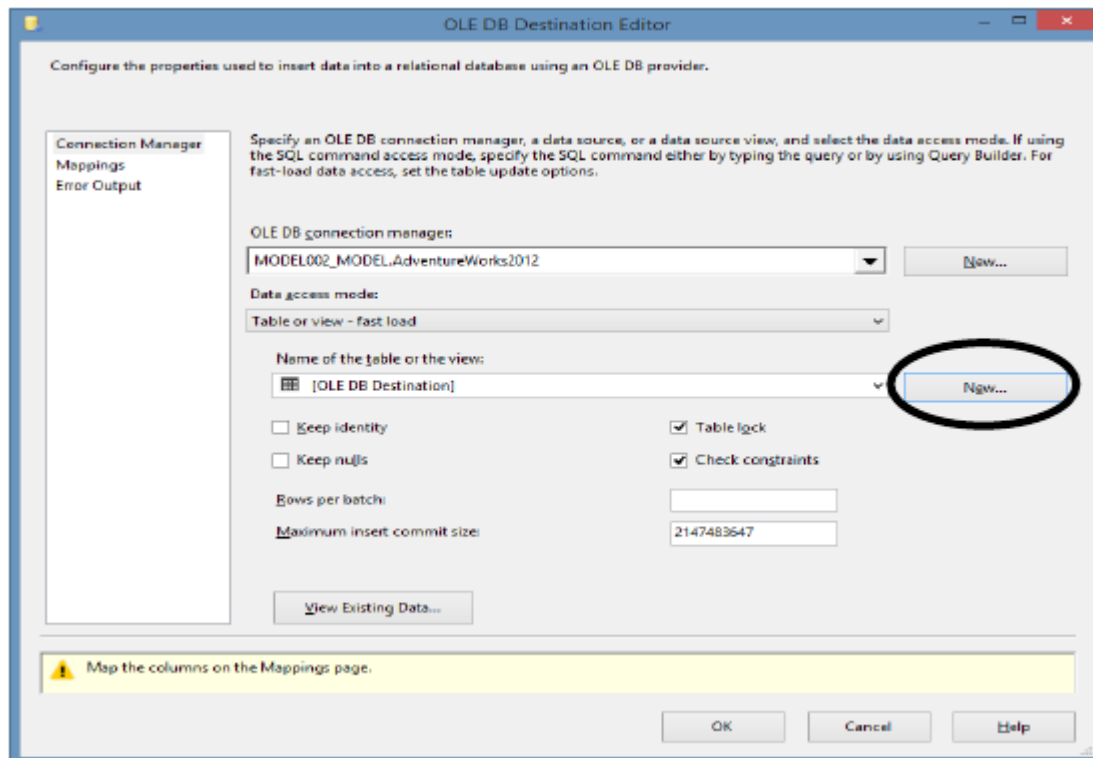
- 16) Double click on OLE DB source → OLE DB Source Editor appears →
click on New to add connection manager.
Select [Sales].[Store] table from drop down → ok

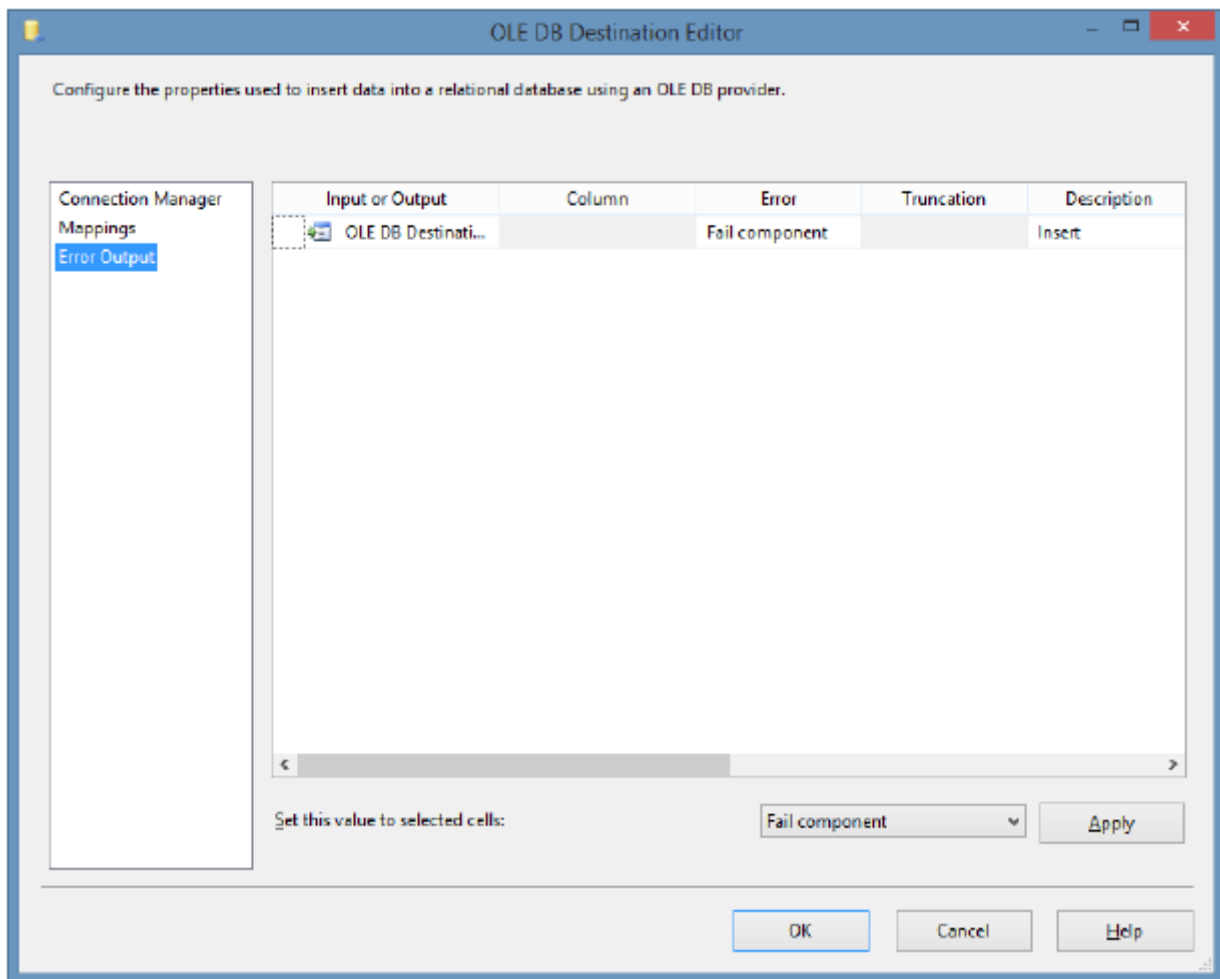


- 17) Drag ole db destination in data flow tab and connect both



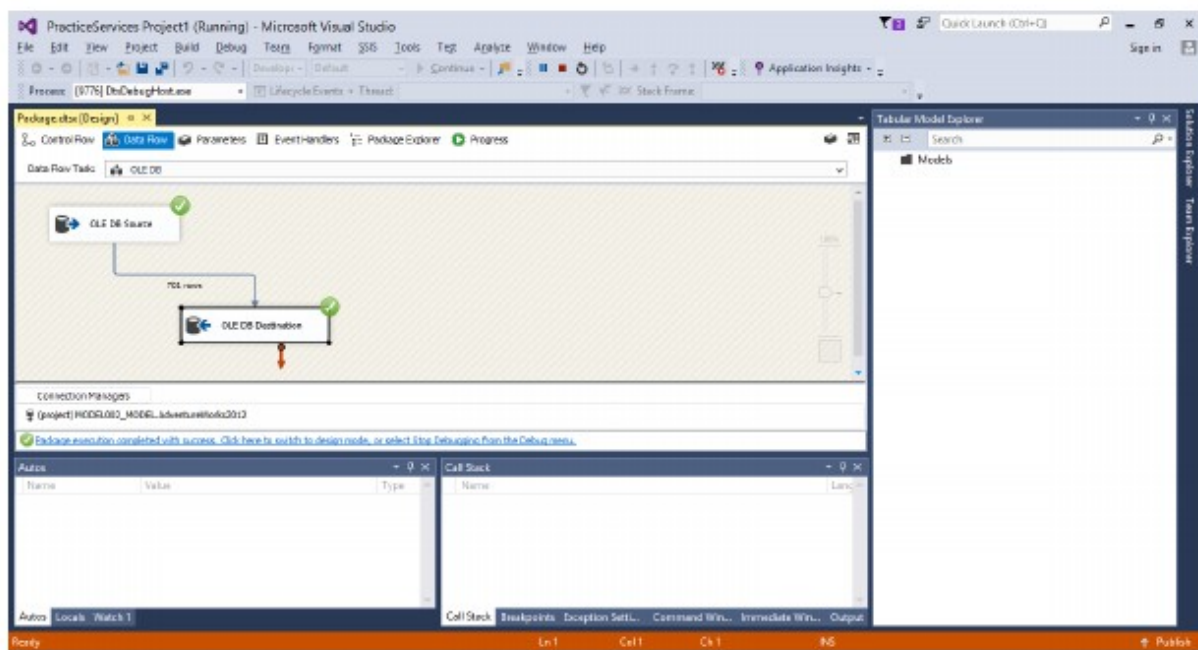
18) Double click on OLE DB destination
Click on New to run the query to get [OLE DB Destination]
in Name of the table or the view.





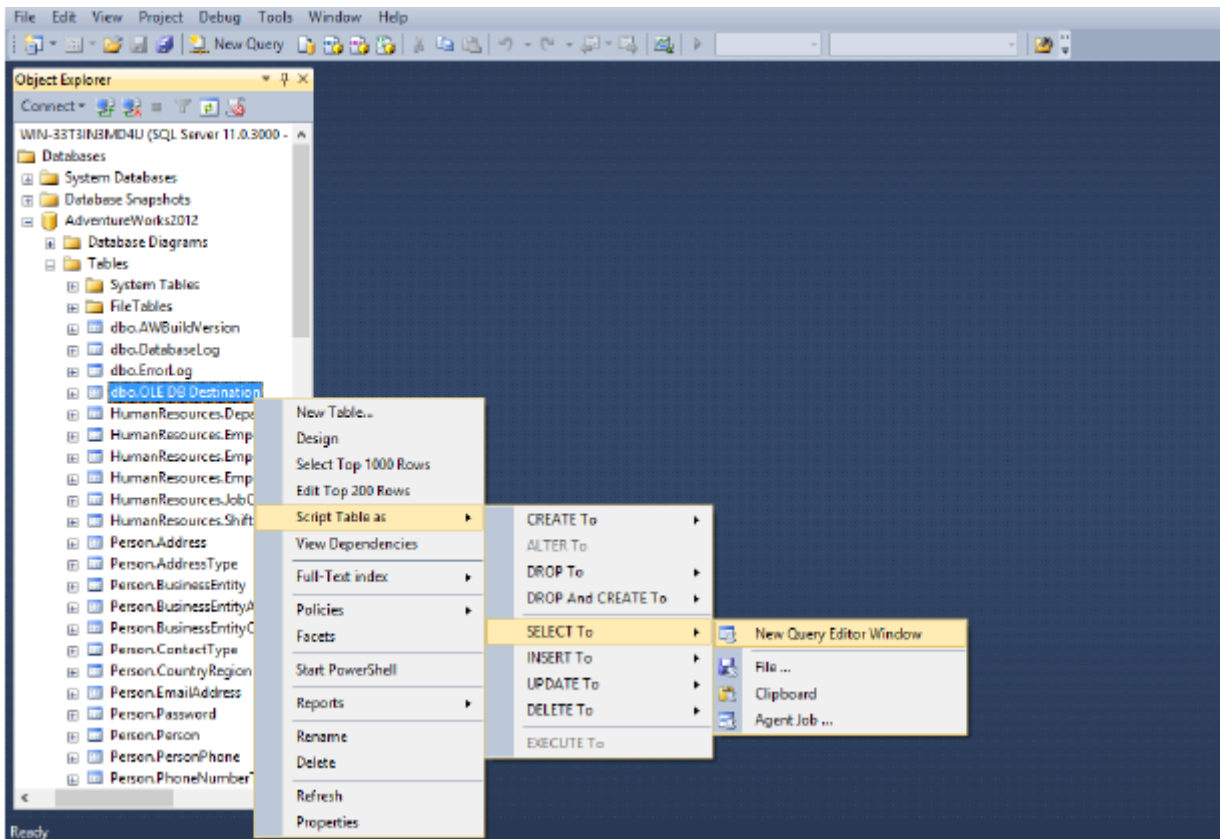
Click on ok

19) Click on start.



20) Go to SQL Server Management Studio

In database tab → Adventureworks → Right click on [dbo].[OLE DB Destination] → Scrip Table as → SELECT To → New Query Editor Window



21) Execute following query to get output.

```
USE [AdventureWorks2012]
GO
```

```
SELECT [BusinessEntityID]
      ,[Name]
      ,[SalesPersonID]
      ,[Demographics]
      ,[rowguid]
      ,[ModifiedDate]
FROM [dbo].[OLE DB Destination]
GO
```


21) Output of Transformation is Presented

The screenshot displays the Microsoft SQL Server Enterprise Manager interface. The central pane shows a SQL query executed successfully, returning 5 rows of data. The query is as follows:

```
USE [AdventureWorks2012]
GO
SELECT [BusinessEntityID]
      , [Name]
      , [SalesPersonID]
      , [Demographics]
      , [rowguid]
FROM [dbo].[OUT OF Destination]
GO
```

The results pane shows the following data:

BusinessEntityID	Name	SalesPersonID	Demographics	rowguid
232	New-Deal Bike Store	275	<StoreSurvey online>http://schemas.microsoft.com/...	A2257E3-640D-40BC-B305-74C...
234	Professional Sales and Service	276	<StoreSurvey online>http://schemas.microsoft.com/...	890CA688-0681-4A13-B07E-201...
236	Pideas Company	277	<StoreSurvey online>http://schemas.microsoft.com/...	339C3638-1335-421A-A25A-B54...
236	The Bike Mechanics	275	<StoreSurvey online>http://schemas.microsoft.com/...	7684F278-F0C8-4D16-BD75-213...
300	Nationwide Supply	206	<StoreSurvey online>http://schemas.microsoft.com/...	C3FC3705-A0C4-473A-9258-C82...

The right pane shows the 'Current connection parameters' for the connection 'MODEL002/MODEL002'. The connection is open, and the session tracking ID is 52.